

EL SERIES INJECTION QUILL

For safe delivery of chemicals into pipelines

SigmaMotor EL Series Injection Quills are used to provide safe delivery of chemicals into pipelines. The quill end ensures the dispersion of the chemicals away from the pipe wall.

The integral spring loaded check valve prevents backflow from the pressurized pipe if there is a break in the discharge piping.

A union connection on the inlet allows for ease of installation and maintenance.

OPTION

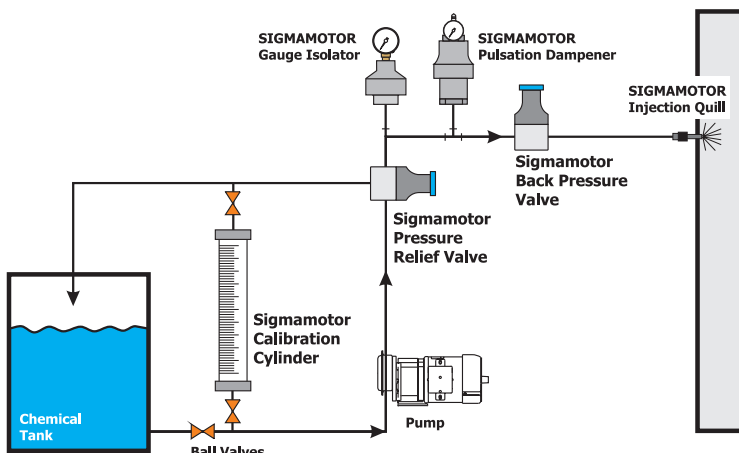
- The EL Series can also be configured for use as an in-line check valve.

Specifications

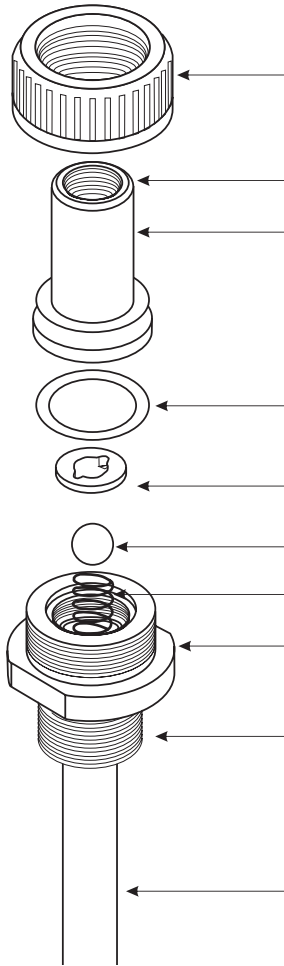
- Available in PVC, PVDF and 316 stainless steel
- Removable check valve seat
- Union inlet w/ Viton o-ring
- Pressures to 1000 psi.
- Temperatures to 500° F
- Inlet tubing connector options available
- 1/2" and 3/4" NPT process connections available
- 4" quill length standard
- Overall length - 8.5"



Typical System Block Diagram



EL SERIES EXPLODED VIEW



1	Nut
2	1/2" FNPT
3	Injection Valve Adapter
4	O-Ring
5	Valve Seat
6	PTFE Ball
7*	Spring (Hastalloy C)
8	Valve Body
9	3/4" MNPT (Std.)
10	Quill 4" (Std.)



SigmaMotor Inc.
PO Box 298, 3 North Main Street
Middleport, NY 14105
Tel: 716.735.3115 Fax: 716.735.3425
info@sigmamotorinc.com
www.SigmamotorInc.com